

John Wilkie Papermill Services Ltd

Maryfield, Manse Lane, St Fillans, Perthshire UK PH6 2NF

Tel 0044 (0)1764 685267 email jw@wilkiemaryfield.co.uk

www.johnwilkiepms.co.uk

In Association with W & S MILLS LTD we offer the following:

Available from 01 02 2024

Paper machine producing greaseproof and tracing papers.

Maker: Ahstrom, year 1972.

Deckle width: minimum 2300mm maximum 2800mm

Speed: minimum 40 m/min maximum 145 m/min

Gsm: minimum 48gsm maximum 180gsm

Machine drive: right side from flowbox.

A STOCK PREPARATION AREA



Roll store with Jylhavara roll splitter, 1250mm wide x 1250mm diameter. Fork truck loading.

Bertrams batch pulp, running 4%, on one side rotor only as high-speed rotor has been removed.

Pulp bales fed to pulper by a flatbed conveyor.

Above the pulper: three Braithwaite sectional tanks for recycled back water. Tank to the right not in use.

Stainless steel pulper dump chest.

Two dump chests feeding first stage refiners.

Vacuum seal water tank, header tank. Vacuum seal tank feeds into Albany strainer and accept water into tank below the Albany strainer.



John Wilkie Papermill Services Ltd

Maryfield, Manse Lane, St Fillans, Perthshire UK PH6 2NF

Tel 0044 (0)1764 685267 email jw@wilkiemaryfield.co.uk

www.johnwilkiepms.co.uk

Stainless steel first and second stage refiner chests stainless steel approximately 40 m³ capacity with side entry agitators.

Stainless steel broke chest for accepts from hog pit.

Two stainless steel machine chests approximately 20 m³ each.

Dye make up unit.

Water softener system.

Acid/alkaline control system.

Four filters in line.



Parsons Reiss stainless steel drum thickener for hog pit wire thickening.

Design is the same as Holder drum thickener with offset drum type.

Clark and Vicarrio deculator no longer in use. Two small vacuum pumps on deculator.

LD cleaners in operation 13 primary, 3 secondary and at paper machine two Cellco RCD cleaners:

Thick stock feed tank to feed primary feed pump.

Main switchgear for variable speed drives and UPS battery back-up unit for any potential power cuts.



PM3 Main control room with cabinets.

Mill 3300v and 415v for equipment, 3 phase and 50 cycles.

Colour kitchen for machine manual make up and control.

Primary refiners



Claflin 202 - year 1977, 3300v motor.
Pilao RC1 multistage refiner 415v.
Claflin 202 refiner 3300v.
Pilao RC1 multistage refiner 415v.

Secondary refiners



Claflin 202 with 3300 v motor
Claflin 101 with 415 v motor
Claflin 101 with 415 v motor
Claflin 101 with 425 v motor

Tertiary refiners



Claflin 101 with 415 v motor
Claflin 101 with 415 v motor

B Loading bay



Variable height loading ramp for lorry loading.

C Power House



Boilers

Three package boilers, year 1993:

Boiler one 10.5 t/hr at 17 bar pressure.

Boiler two 12 t/hr year 1993.

Boiler three same as boiler two.

Boilers 1,2, and 3 with SAKKE single burners.

Boiler four with twin SAKKE burners, year 1971, rated at 10 t/hr.

Seinour boiler, pressure 2.2N/MM², temp 250 C

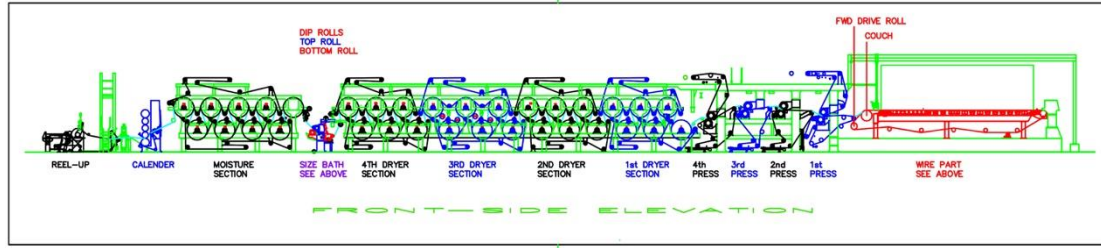
Compressor room

Two Ingersoll screw compressors model: air 75.

Ingersoll air dryer.



D PAPER MACHINE



Single paper machine producing greaseproof and tracing papers.

Makers Ahstrom year 1972.

Deckle width: minimum 2300mm maximum 2800mm

Speed: minimum 40 m/min maximum 145 m/min

Gsm: minimum 48gsm maximum 180gsm

Machine drive right side from flowbox.

Drive is mainly lineshaft with sectional drive to wire, couch.

Bath press has bottom sectional electric drive with top roll driven by the lineshaft.

Lineshaft and sectional drives are DC. Machine with manual start up and stop.

Machine QCS Honeywell.

The mill has in store, a spare flowbox Voith manufacture, 3500mm slice width, year 1996, manual profile control and two holey rolls.

Approach flow: stainless steel Finckh pressure screen with slotted basket, and stainless steel insulated body.

Finckh model E1, type 0.75 vibrating screen stainless steel with 1.5 mm perforations. Screen taking pressure screen rejects.

1 Wire section





Flowbox open type headbox with manual adjustment on slice lip, two holey rolls, wire Karhula shake motion, cantilevered wire section. Flowbox mild steel with stainless lining. Wet end rebuilt 2012.

Wire section length 29.65 m, 3.63 m width. Seven gravity foil boxes, tops PFE.

Wire frame is cantilevered.

Three low vacuum suction boxes with ceramic tops, three intermediate vacuum boxes, five high vacuum boxes with ceramic tops.

Rotabelt vacuum system mill manufacture.

Manual tail cutter.

Suction couch and forward drive roll.

2 Press sections

Four press sections.

First double felted.

Second and third single nip.

Fourth press double felted.

High pressure showers.

All through type presses.

3 Drying sections

Predryers



Twenty-six cast iron predryers in four sections, 1500mm diameter, sheathen rope feed, A/F bearings on auto lub system. All dryer pressures two bar. All dryers covered by a Brunschwiller hood. Front lifting doors. Cross machine gauge at size press/bath measuring moisture.

Size press



In line size press, inclined design. Moisture head prior to size press.

After dryers



First is a spar dryer and the eight remaining drying cylinders CI 1500 mm diameter. A/F bearings, auto lub system. Rear of dryers with thermo compressors and condensate tanks.



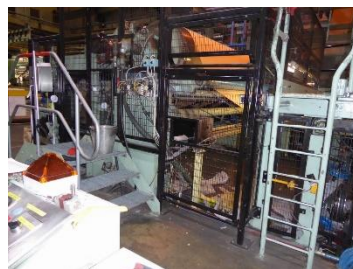
Honeywell web inspection prior to calendar for hole and dirt detection.
Machine scanner year 2006 measuring gsm, moisture, profile, opacity.

Calendar



Kuster calendar with five rolls. Top and bottom Kuster rolls.

Reel up



Bertrams horizontal reel up.

Vacuum system:



Seven Nash vacuum pumps.

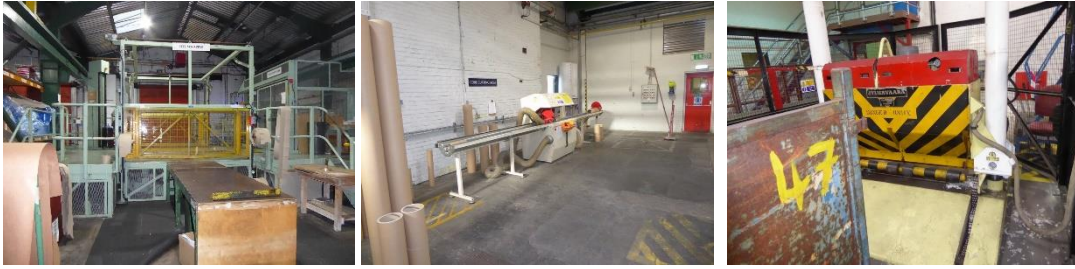
E REWINDER



Hanson rewinder model RDH1 year 1977, with tambour unwind and shaftless rewind. Oscillating unwind, roll diameter in and out 1500mm, twin motor drive on right from unwind. 14 slitter sections, width 3350mm and minimum slit 160mm, design speed 1000 m/min, mill run 220 to 350 m/min.

New drive fitted to rewinder in 2017.

ABC automatic baler self-tying for rewinder trim.



Wrapper for rolls with plastic wrap.
Vertical baler for loose broke.
Core cutter ex Aylesford Newsprint.
Roll splitter Jylhavara. Roll 1500mm x 1500mm.
Roll upender for feeding wrap systems.

F Paper Converting **Guillotine**



Wolenberg 155 programmatic, air float guillotine.

Shrink wrap



Thimon shrink wrap system with conveyors and shrink wrap tunnel.

Shrink wrap pallet line

BECK shrink wrap line for pre packed boxes. Loading by air operated Dalmec vacuum loader.

Sheeter



Strachan and Henshaw sheeter 1400mm, year 1991, twin double Favalesa shatflless unwinds with disc brakes and tension control. Four slitters, synchro cut, reject gate, layboy.

Baler for polythene waste

Baler for paper and card

Machine for stripping paper from cores

CNG vertical paper baler.

Guillotine



Polar 155 EMC Monitor guillotine.
Air float table, light guarding, infeed and out feed tables.

Wrapper



Adpak wrapper for A4 and A3 reams.

Folio wrapper



Maruishi folio wrapper taking reams from sheeter. Year 1992, manual ream feed, adjustable wrapping on length, width and height. Paper wrap with hot melt gluing. Auto pallet change over on pallet layboy.
Two box strapping units.
Two older core cutters. One not in use.
Vertical baler. Dalmecc lifier. Horizontal baler with auto tying on bale.

John Wilkie Papermill Services Ltd

Maryfield, Manse Lane, St Fillans, Perthshire UK PH6 2NF

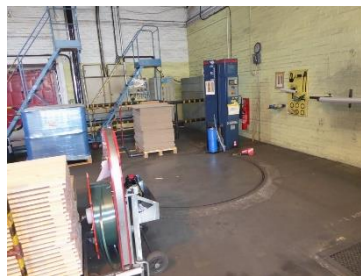
Tel 0044 (0)1764 685267 email jw@wilkiemaryfield.co.uk

www.johnwilkiepms.co.uk

Salvage rewinder



Masson Scott rewinder model U1A. Width 1800mm.
Wood and Stirling shaftless unwind with simplex floor pick up for 1200mm to 500mm roll diameters, 1800mm to 450mm width, five slitters, disc brakes with auto tension control. Single motor drive with variable speed pulley system between roll support drums. Cores 3", 6" and 120mm. Load cells and web guide. CMC controls.



John Wilkie Papermill Services Ltd

Maryfield, Manse Lane, St Fillans, Perthshire UK PH6 2NF

Tel 0044 (0)1764 685267 email jw@wilkiemaryfield.co.uk

www.johnwilkiepms.co.uk

GNT balers for lose broke. Franston roll wrapper. EBERGRIP vertical roll wrapper. PAL 3000 wrapper for pallets.

G Effluent Plant



Two settlement tanks.

Neypic Drum thickener for thickening sludge prior to screw press.

Neypic Taster screw press giving approximate dryness of 37%.

H Roll grinder



Dronsfield roll grinder grinding concave and convex cambers, finishing belt.
Roll face 3000 mm and swing 1500mm.

THIS INFORMATION IS THE TITLE OF JOHN WILKIE PAPERMILL SERVICES LTD AND SHOULD NOT BE COPIED OR FORWARDED TO A THIRD PARTY WITHOUT CONSENT.

FOR YOUR GENERAL INFORMATION WE HAVE TO INTIMATE THE FOLLOWING TO YOU:

This schedule has been prepared solely for the guidance of prospective purchasers and does not constitute (and at no time shall be deemed to constitute) an offer or contract or any part of an offer or contract. Additionally, no Warranty is given to the accuracy of any measurements, specifications or other details whatsoever given within this schedule.

Whilst every reasonable effort has been made to verify any statement, description, or comment made within this schedule,

John Wilkie Papermill Services Ltd

Maryfield, Manse Lane, St Fillans, Perthshire UK PH6 2NF

Tel 0044 (0)1764 685267 email jw@wilkiemaryfield.co.uk

www.johnwilkiepms.co.uk

for the avoidance of doubt it is emphasised that the purchaser must make their own enquiries and satisfy themselves.