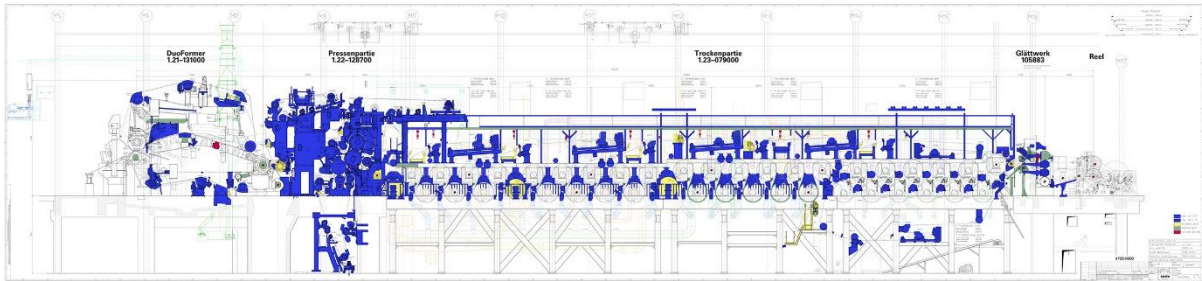


**John Wilkie Paper Mill Services Ltd**  
Maryfield, Manse Lane St Fillans Perthshire UK PH6 2NF  
Tel 0044 (0)1764 685267 email [jw@wilkiemaryfield.co.uk](mailto:jw@wilkiemaryfield.co.uk)  
[www.johnwilkiepms.co.uk](http://www.johnwilkiepms.co.uk)

In Conjunction with  
**Hilco Global APAC**  
Tel 0061 412 389090 email: [ascharer@hilcoglobal.com](mailto:ascharer@hilcoglobal.com)

## PAPER MACHINE 8565mm AS



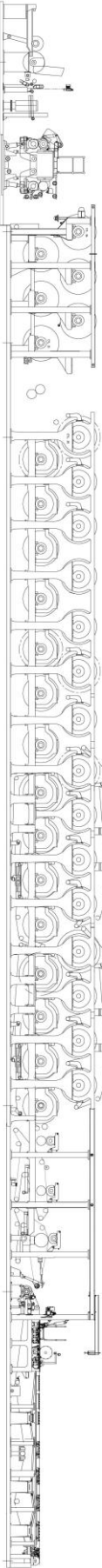
**NOTE: Mill using 415v, 3ph, 50cyls.  
Larger motors 6600v.**

**Version 10<sup>th</sup> September 2024**

**Woodyard**



**Directors: John Wilkie, Christine Wilkie B.Sc. B.Acc.(Hons), C.A.  
Registered in Scotland: No. SC 254554 Vat No. GB 827444418**



**John Wilkie Paper Mill Services Ltd**  
Maryfield, Manse Lane St Fillans Perthshire UK PH6 2NF  
Tel 0044 (0)1764 685267 email [jw@wilkiemaryfield.co.uk](mailto:jw@wilkiemaryfield.co.uk)

[www.johnwilkiepms.co.uk](http://www.johnwilkiepms.co.uk)



Spare half debarking drum stored next to woodyard complete with circumference gear.  
Two log infeeds. One feeding into section with saws. Second being a direct feed onto the conveyor into debarking drum.

Capacity: maximum 2000 t/day. Average 1200 to 1700 t/day.

Solidrum De Barking drum. Number 5637-L.

Size 12ft 8in x 100ft.

Mill not using log saws.

Logs fed via conveyor passing metal and stone detector.

Logs no larger than 450 mm diameter.

#### **Chip screen KMW model SCL, year 1980**

Chipper make: Carthage. Serial number and model IC-1952-78.

Disc diameter 112".

Right-handed with 12 knives, knife size type B-4592, size 0.5 X 6.5 X 30 inches.

Seimens drive 1000 Kw, 330 rpm, IP23, year 1979.

#### **Andritz re-chipper year 2007**

Chips stored in Weinberg facility screw fed to conveyor system feed into the TMP plant.

Second supply of chips by road feeding into a hopper with a secondary conveyor.

Both conveyors have covers and walkways.

Bark from de barking drum feeds a conveyor to a hog hammermill which feeds into a cone like vessel identified as an ATLAS.

Atlas has rotating scoop internals.

Bark collected is blown via external pipes to the mail boiler.

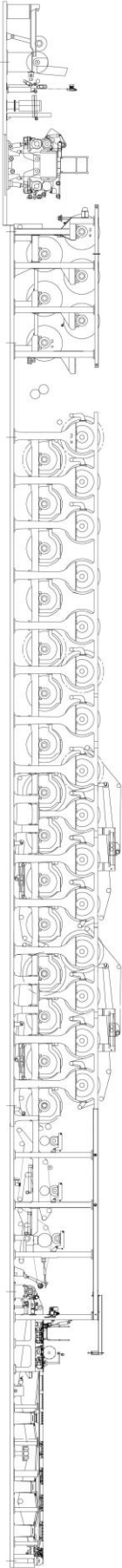
#### **Mill weighbridge on load cells**

Wastepaper delivery by road

Station for lorries delivering wastepaper. Trailer attached to table with ties before being tipped into wastepaper warehouse. Tipping by two large hydraulic rams.

**Directors: John Wilkie, Christine Wilkie B.Sc. B.Acc.(Hons), C.A.**  
**Registered in Scotland: No. SC 254554 Vat No. GB 827444418**

**John Wilkie Paper Mill Services Ltd**  
Maryfield, Manse Lane St Fillans Perthshire UK PH6 2NF  
Tel 0044 (0)1764 685267 email [jw@wilkiemaryfield.co.uk](mailto:jw@wilkiemaryfield.co.uk)  
[www.johnwilkiepms.co.uk](http://www.johnwilkiepms.co.uk)

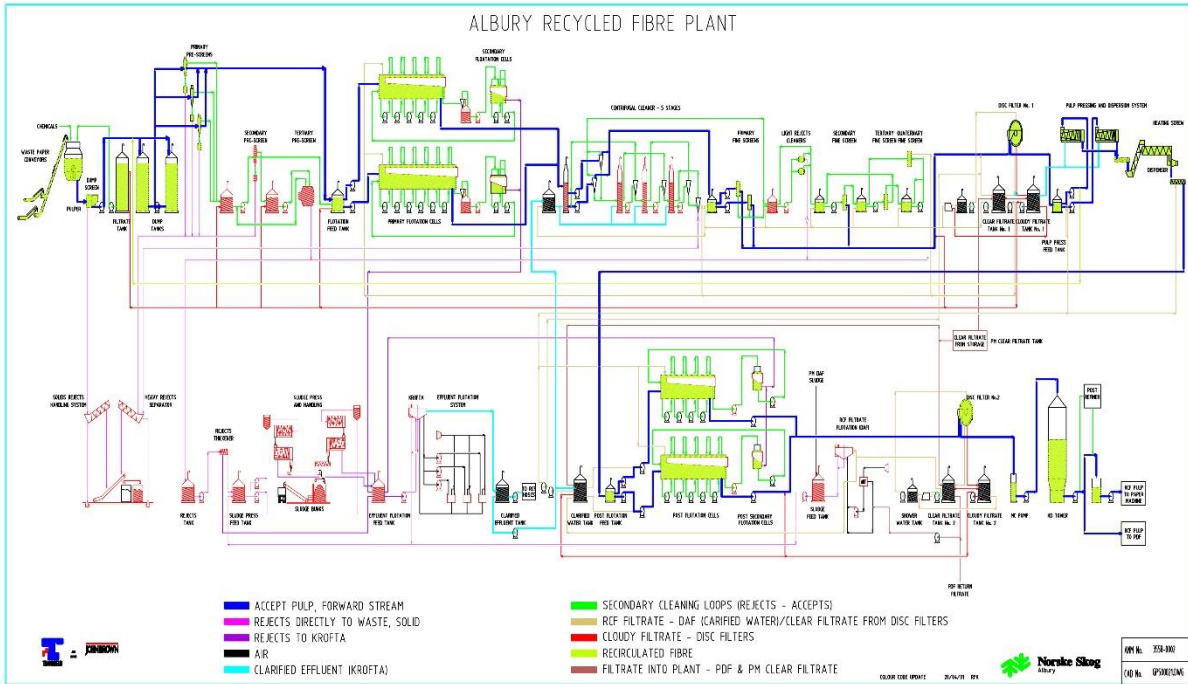


**RCF**



**Directors: John Wilkie, Christine Wilkie B.Sc. B.Acc.(Hons), C.A.**  
**Registered in Scotland: No. SC 254554 Vat No. GB 827444418**





**RCF was about 385 BDT/day (early 2000's production rate) at a targeted brightness of >60% ISO.**



**Directors: John Wilkie, Christine Wilkie B.Sc. B.Acc.(Hons), C.A.**  
**Registered in Scotland: No. SC 254554 Vat No. GB 827444418**

# John Wilkie Paper Mill Services Ltd

Maryfield, Manse Lane St Fillans Perthshire UK PH6 2NF

Tel 0044 (0)1764 685267 email [jw@wilkiemaryfield.co.uk](mailto:jw@wilkiemaryfield.co.uk)

[www.johnwilkiepms.co.uk](http://www.johnwilkiepms.co.uk)

At infeed to building deinking chemical storage tanks (caustic, silicate, peroxide, soap/surfactant, EDTA.)

Pulper transferred within the group. Capacity was 60 m<sup>3</sup> and operating in HC mode.

Voith – Trumag Sedimex S 600 and Voith Contaminex model CMS40, both year 1993.

Light rejects to a stainless steel trommel. Rejects to Shute on ground level.

Three external stainless tanks. One for filtrate water and remaining two as stock dump chests.

Accepts to three stages of Finckh screens, two Cyclo-screens Model II and a Hico-Screen Model I E.

Flotation feed tanks for primary and secondary flotation cells.

Voith primary flotation with secondary flotation cells, year 1995 Type E, number 35-81

Sludge to Krofta Supercell type SPC49. ADT model 2500, flow 2500 litres/min.

Sludge thickened by two screw presses: type FKC, models SHX-1100 X 9000L and a SHX800 X 6000L.

Each press with a pre feeder thickener screw press with twin screws.

Voith post floatation cell, number 365, year 1995.

Both cells each with secondary flotation cells.

After post floatation and prior to MD pump there is a disc filter: Andritz manufacture, and two Meri/Deltafloat flotation cells model 149. Filtrate loop cleaning for RCF and TMP/PM Diameter 14,000mm, floatation area 149 m<sup>3</sup>, throughput day 900 m<sup>3</sup>/ hr, max stock load 8.6 t/day.

Flocculant /polymer and bentonite make up tanks/pumps on basement floor.

Second Meri/Deltafloat unit Diameter 14,000mm, floatation area 149 m<sup>3</sup>/ 1040 m<sup>3</sup>/ hr, max stock load 8.6 t/day.

In basement sludge transfer lines one and two feeding sludge into a feed to the external Saxon sludge final thickener.

LD cleaners by Celleco. Five stages. Light rejects returned.

Two Light Rejects Cleaners, Gyroclean,

Two stainless Voith vertical pressure screens model VS 35 with 0.18 mm slots

Voith secondary vertical pressure screen model VS 25 in basement with 0.18 mm slots

Voith third stage vertical screen in basement, model VS 20.

Voith fourth stage mini-sorter screen VS 11.

Small pre thickener with F/G cover. 2000l/min

Celleco Hedemora disc filter, rebuilt by Andritz in 2002.

Two FKC screw presses with Hagglund hydraulic drives, model type HX-1,250 X 9000L Stainless steel, year 1994.

FMW heating screw for Voith Disperser,

Disperser Voith model ZSE 20/450, 1500 rpm, 1500 Kw drive, operating at 28 to 30% consistency. Disc diameter 1320mm.

Voith post floatation with secondary flotation cells number 365, year 1995.

**Directors: John Wilkie, Christine Wilkie B.Sc. B.Acc.(Hons), C.A.**

**Registered in Scotland: No. SC 254554 Vat No. GB 827444418**

MC pump to MD tower  
RCF pulp to paper machine .

Air compressor / receivers in basement for air supply to flotation cells.

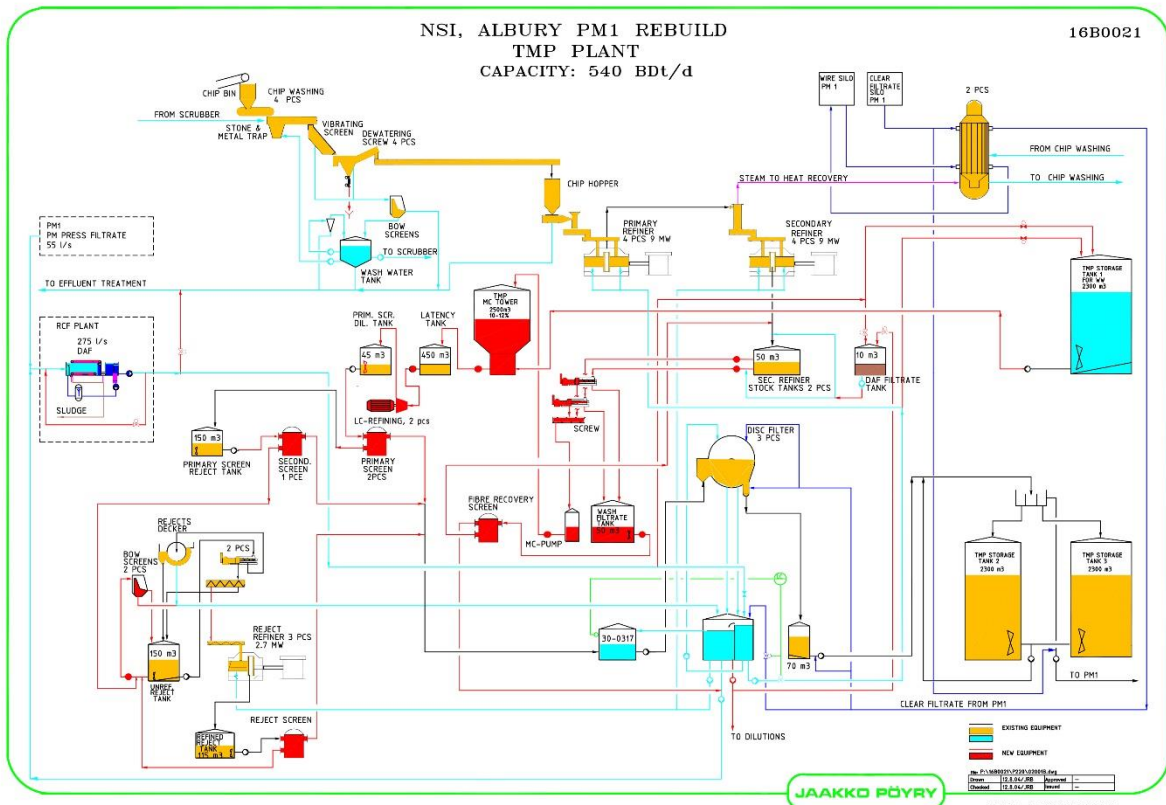
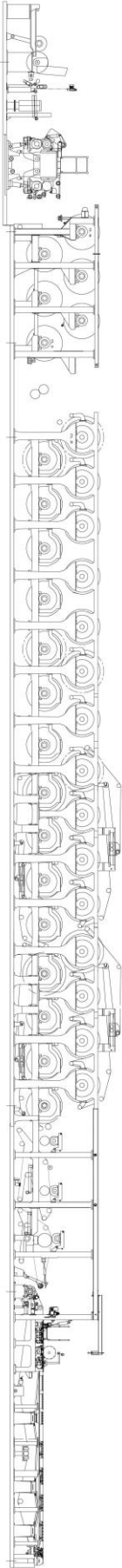
### Sludge handling



Saxon sludge handling system, capacity 60t/hr.  
Comprises a concrete structure with collection hopper. Hydraulic rams press sludge into an open concrete bay for collection by bucket truck.  
For thicker sludge side mounted flatbed conveyor with screw for loading skips.

### TMP PLANT





**TMP: 540 BDT/day average after the 2005 upgrade.**  
**Four main lines with primary and secondary refining. Each 200 BDT/day**

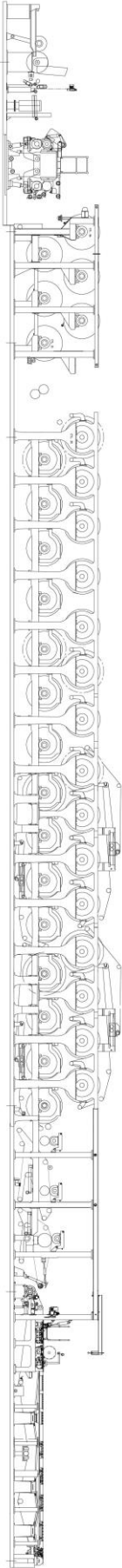
**Directors: John Wilkie, Christine Wilkie B.Sc. B.Acc.(Hons), C.A.**  
**Registered in Scotland: No. SC 254554 Vat No. GB 827444418**

# John Wilkie Paper Mill Services Ltd

Maryfield, Manse Lane St Fillans Perthshire UK PH6 2NF

Tel 0044 (0)1764 685267 email [jw@wilkiemaryfield.co.uk](mailto:jw@wilkiemaryfield.co.uk)

[www.johnwilkiepms.co.uk](http://www.johnwilkiepms.co.uk)



Chips feed into hoppers.

Stone and metal trap.

Chip washing four sections.

Vibrating screens : Ludowici model CAT 1-15736.

Dewatering screw

Water from screw to DSM screen

Wash water tank. Waste to scrubber

Chips to four pressurized primary refiners, each with 9 Mw motors

Feeding screws

Andritz model 50-11, number 98-00 520

Andritz (sprout bower) type 50-00, number 78-2290

Andritz model 50-00, number 782290

Andritz model 50-00, number 782291

Motors 9000 Kw, 1500 rpm, 11,000 volts. ASEA manufacture.

Two Andritz screw presses model SCP 1008LM,

SCP100B1M29/478/1-year 2005

Screw press wash filtrate tank

Screw press filtrate to two stage fibre recovery INCLINED SCREENS

Four atmospheric secondary refiners each 9 mw

Motors 8500 HP, 6600v, 1500rpm

Andritz DEC-14,45-1B-EM 84-098-A14

Sprout Waldron 45-18

Sprout Waldron 78-2475

Spout Waldron 78-2474

Steam generated to two heat recovery units

Secondary refiners stock tanks with MC pumps, including conditioners and vacuum pumps.

HD cleaner with reject chamber

Pressurised pre steaming tube

TMP filtrate tank

TMP filtrate tower

Accepts from secondary refiner to two stock tanks, each 58 m<sup>3</sup> capacity

TMP/PM backwater DAF filtrate tank 10 m<sup>3</sup> for refiner dilution.

TMP MC tower

Latency tank feeding two low consistency refiners

Voith model Twinflow10TF4D

DIL tank feeding screens:

Two primary screens producing 58 t/day: Andritz Modus screens. Basket 0.18mm slots.

One secondary screen: Andritz model AF-80B/10B. Basket 0.28mm slots.

Primary screen reject tank

Secondary screen rejects

**Directors: John Wilkie, Christine Wilkie B.Sc. B.Acc.(Hons), C.A.**

**Registered in Scotland: No. SC 254554 Vat No. GB 827444418**



# John Wilkie Paper Mill Services Ltd

Maryfield, Manse Lane St Fillans Perthshire UK PH6 2NF

Tel 0044 (0)1764 685267 email [jw@wilkiemaryfield.co.uk](mailto:jw@wilkiemaryfield.co.uk)

[www.johnwilkiepms.co.uk](http://www.johnwilkiepms.co.uk)

Rejects decker Hooper manufacture  
Water to two DSM screens  
Reject from screens to unrefined reject tank.  
Unrefined rejects to two pressure DSM screens to control consistency  
Two reject screw presses feeding three rejects refiners with 2.7 mw motors  
Screw presses. Manufacture Thune/Kvaerner model SP 45L  
Pressure screen accepts to Disc filter feed.  
Three Number 5637-L  
e disc filters, Dorr Oliver manufacture, 3600mm diameter  
Clear and cloudy filtrate tanks from disc filter  
Deckard stock tank  
Two TMP stock chests each 2300 m<sup>3</sup> capacity.

Trim refiner GL&V 38" 4600 series. Running mono flow. Parts available to convert to duo flow including discs and spacers . Motor 1200 Kw 530 rpm, Plate pattern 38907BJN/ 38908BJN.

**Note: Numerous new spare Andritz refiner fillings. Patterns/Models on request.**

## Steam Plant

Package boiler and Biomass Boiler) 80tph steam generation.

## Main boiler



John Thomson manufacture. Year 1979.  
Total grate area (front shaft to rear seal) 42.4 m<sup>2</sup>  
Furnace plan area 38.8 m<sup>2</sup>  
Furnace volume 486 m<sup>3</sup>  
Furnace heating surface: actual projected 153m<sup>2</sup>, effective projected 274m<sup>2</sup>  
Tube bank heating surface, total circumferential 1949 m<sup>2</sup>  
Tubular air heater surface 1793  
Steam air heater heating surface, total over  **fins 380m<sup>2</sup>**  
Performance at Maximum Continuous Rate on wood firing  
Steam 80 t/hr, pressure gauge 1400 kPa, feedwater temp 120deg

**Directors: John Wilkie, Christine Wilkie B.Sc. B.Acc.(Hons), C.A.**  
**Registered in Scotland: No. SC 254554 Vat No. GB 827444418**

Gross thermal efficiency 83.1  
Gas and bark fired.  
**Full details on request.**

**Maxitherm Package boiler, gas fired**

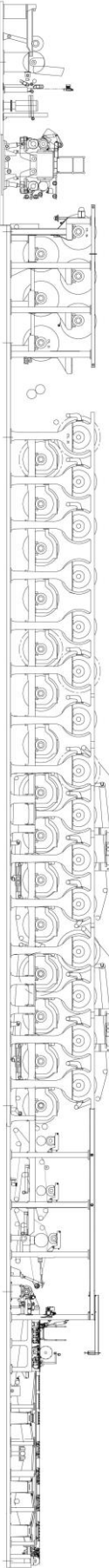


Model D Water tube  
Number L50 DNL/2000  
D.I.R registered number 1918 278  
Date registered 5/8/86  
Design code AS 1228  
Maximum continuous rating 50,000 kW  
Kgs/hr F&A 100 Deg C  
Maximum firing rate 5813 m3/min  
Gas inlet pressure 400KPA/360KPA  
**Full details on request**

**Steam Turbine**



SEIMENS MANUFACTURE GENERATING 2.5Kw, year 2016  
Model SST-060,1500 rpm, AFA6 G6B  
Exhaust steam min 1.5 norm, 2.5 max 4.1 bar  
Number 4.3666.045  
1635 trip speed  
Type SST-060 AFA 66B



## John Wilkie Paper Mill Services Ltd

Maryfield, Manse Lane St Fillans Perthshire UK PH6 2NF

Tel 0044 (0)1764 685267 email [jw@wilkiemaryfield.co.uk](mailto:jw@wilkiemaryfield.co.uk)

[www.johnwilkiepms.co.uk](http://www.johnwilkiepms.co.uk)

Output 4468

Speed 1636 rpm

Steam pressure 14.8min/16.5 normal and max 21. Bar

Exhaust steam 1.5 min/2.5 normal/4.1 max /bar

### Generator ABB

Year 2016, 3 ph, 50 Hz

Output 5412 Kw, voltage 6000, speed 1500 rpm

Current 473.4 A, power factor 0.8, excitation PMG, weight 13,100 kgs, connection Y.

### Generator AVR panel 72-RP17

[Full details on request](#)

## Kraft Pulp Plant



Talc feed hopper, discharge screw, bucket elevator, transfer screw. Talc to intermediate chest.

Horizontal bale conveyor. Inclined conveyor to pulper.

Beloit Shark stainless steel 90 m<sup>3</sup> pulper. Batch operation with LC rotor and gearbox drive.

Two Sprout Waldron (Koppers) refiners with inbuilt motors.

Model numbers 62-024 and 78-2481.

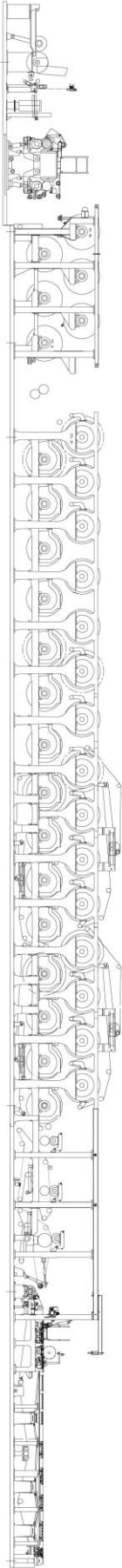
Model type 36-18 and 36-18.

Motors 6600, 900 hp and 1485 rpm.

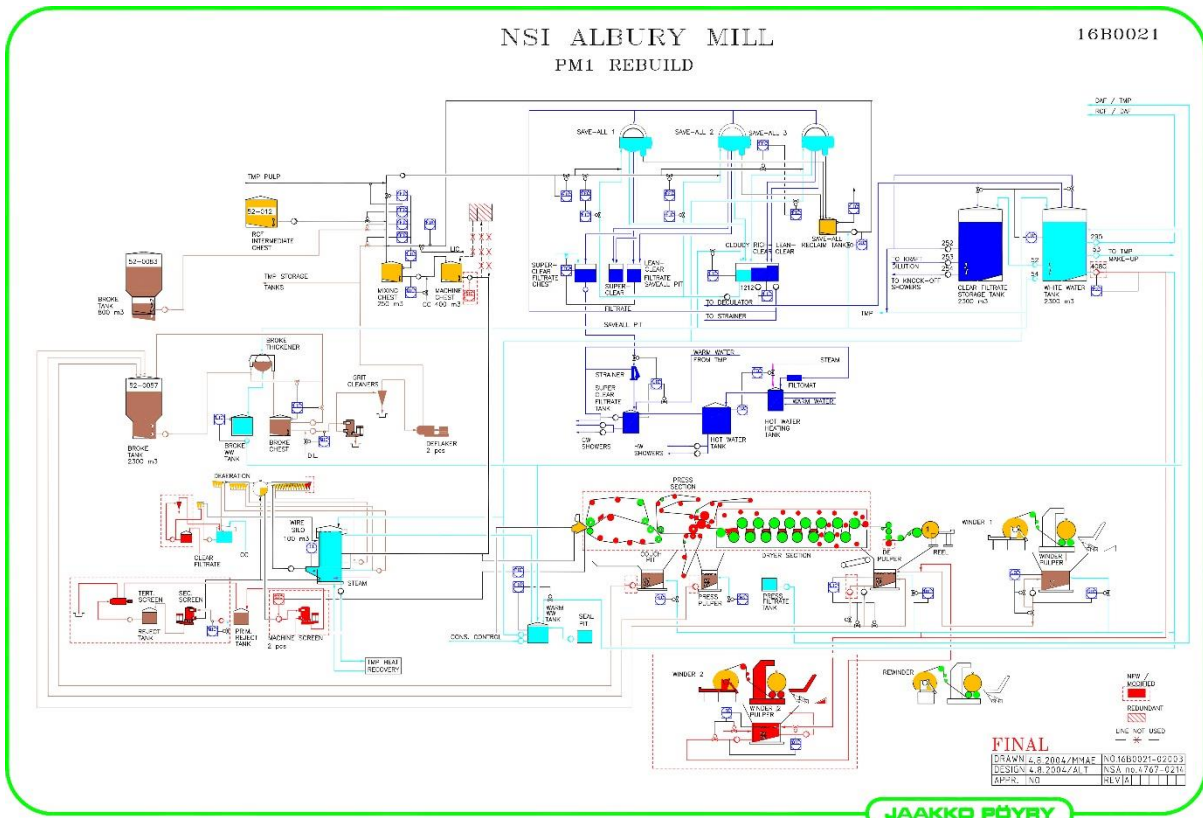
**Directors: John Wilkie, Christine Wilkie B.Sc. B.Acc.(Hons), C.A.**

**Registered in Scotland: No. SC 254554 Vat No. GB 827444418**





**PM1 design data**



**Directors: John Wilkie, Christine Wilkie B.Sc. B.Acc.(Hons), C.A.**  
**Registered in Scotland: No. SC 254554 Vat No. GB 827444418**



**DCS Valmet 2005**  
**QCS Valmet 2005**

**Machine drive on left side when looking from the wet end.**

**Approach flow.**

- Colour kitchen for four colours
- Mixing chest accepting TMP/RCF broke and reclaimed fibre
- From mixing chest to machine chest
- Stock to cleaner system
- Cleaner and screen rejects to WWTP
- Deculator for air removal from stock vacuum assisted. Make: Wessenberg Martin
- Thin stock screens, Andritz manufacture
- Two Andritz model HB5 with 1.8mm holes
- Andritz secondary screen, Andritz type HB2E with 1.8 mm basket
- Andritz third stage screen Andritz type FD with 0.25 mm basket

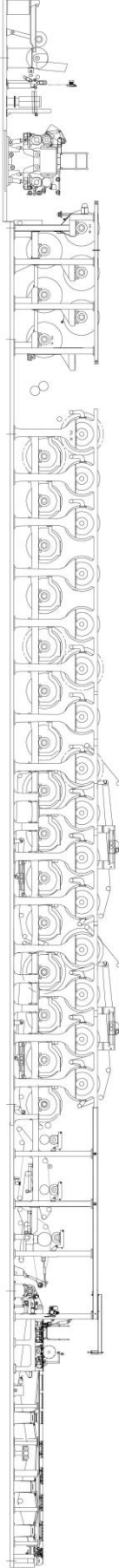
**Directors: John Wilkie, Christine Wilkie B.Sc. B.Acc.(Hons), C.A.**  
**Registered in Scotland: No. SC 254554 Vat No. GB 827444418**

# John Wilkie Paper Mill Services Ltd

Maryfield, Manse Lane St Fillans Perthshire UK PH6 2NF

Tel 0044 (0)1764 685267 email [jw@wilkiemaryfield.co.uk](mailto:jw@wilkiemaryfield.co.uk)

[www.johnwilkiepms.co.uk](http://www.johnwilkiepms.co.uk)



Backwater to disc filter  
Thin stock to headbox  
White water from PM wire section and LD cleaners to white water Silo  
Fibre recovery by Three disc filters. Two Celleco Hedemora. Model VDF 3.66 x 24 and one model VDF 5. 2 X 30.  
Recycled papers from the DIP plant (ONP and OMG)  
Wood logs (Radiata Pine) for the TMP plant

Original start-up year and main supplier 1981 (Valmet)  
Major rebuilds and main suppliers: former rebuild 1993 (Valmet), shoe press and dryers rebuild 2006 (Voith)  
Production 280,000 t/a  
Design capacity 866 t/d at PM reel  
Net capacity 740 t/d after winder  
Paper grades: Std Newsprint  
Basis weight range 42 – 45 gsm  
Furnish DIP 30% and TMP 70%  
Recycled papers from the DIP plant (ONP and OMG)  
Wood logs (Radiata Pine) for the TMP plant  
Design speed 1600 m/min  
Avg operating speed 1500 m/min  
Former concept horizontal gap former, Valmet HHS Speedformer  
Press concept Voith Flexonip, Duocentri Shoe Press, new 2006  
Basement wet end pulper.

42 Drying Cylinders:  
Cylinders: design steam pressure 5 bar (g)  
Cylinders diam 1.83 m  
Operating steam pressure 3 bar (g)  
Fibron automatic tail feed  
Valmet QCS scanner  
Calendar on-machine 3-nip hard  
Calcoil profile control  
Basement under machine pulper  
Basement with collection system feeding broke into the dry end pulper  
Max jumbo reel diam 2200mm  
Shoe arm sheet transfer onto new reel shells  
Wire width 9200 mm  
Paper width at reel 8565 mm  
Paper width after winder 8500 mm  
Paper machine AC with silent drive.  
All dryers on A/F bearings with central lubrication system.

**Directors: John Wilkie, Christine Wilkie B.Sc. B.Acc.(Hons), C.A.**  
**Registered in Scotland: No. SC 254554 Vat No. GB 827444418**



# John Wilkie Paper Mill Services Ltd

Maryfield, Manse Lane St Fillans Perthshire UK PH6 2NF

Tel 0044 (0)1764 685267 email [jw@wilkiemaryfield.co.uk](mailto:jw@wilkiemaryfield.co.uk)

[www.johnwilkiepms.co.uk](http://www.johnwilkiepms.co.uk)

Oil systems complete with centrifuge for water separation.  
Six direct drive vacuum pumps: model Flowtech/Nash model CL-14002 G .  
Finished reel directly to the Valmet rewinder reel stand.  
Reels transported on reel carriage to the Voith rewinder.  
Reel crane hitch for changing reels/shells from drum reel up rated at 55 tones

**Machine house serviced by three overhead cranes.**

**Machine laboratory with L and W tensile tester and sample guillotine.**

## Rewinders

### RESTATIC Salvage rewriter



Shaftless unwind and rewind, floor pick up. Serial number 03115. Year 2003.  
Model OMR-1500/2000. Tension control, six driven slitters. Weight 12,000 kgs,  
Roll diameter maximum is 1600mm in unwind, maximum 1500mm in rewind.  
Chuck core sizes 70 and 100mm, maximum reel weight 2000kgs.  
Shear slit with six knives, top knife diameter 130mm and bottom 125 mm diameter, minimum  
slit width 120mm, servo motor driving bottom knives 4.7 kw, knife setting semi-automatic.  
Preset from OP panel, speed 1400 m/min, design speed 1599 m/min, auto tension control  
and reel guidance.

### Two machine rewinders

**Directors: John Wilkie, Christine Wilkie B.Sc. B.Acc.(Hons), C.A.**  
**Registered in Scotland: No. SC 254554 Vat No. GB 827444418**

**VALMET rewinder**



Model WINAIR, KL 1000, year 1979, number 246-00-440,415v, Brake generator drive on unwind stand, rebuilt so no air system required.

12 slitters with driven knives, auto knife setting, tension control, edge guiding. Shaftless rewind, basis weight 40-52 gsm, unwind web width 8550mm, rewind web width 8500mm, speed 2500 m/min, core 76mm, rewind 1500mm, unwind 2500mm.

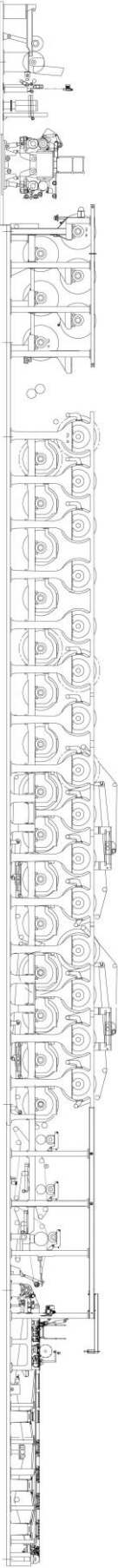
Roll ejector and lowering table. Auto core feed, driven unwind stand. Reel shell 820mm diameter, unwind diameter 2800 mm, trim 20 to 200mm, maximum rewind diameter 1500mm and 800mm minimum, maximum reel width 2000mm, minimum reel width 380mm, motor 400v and control voltage 230v, 50 HZ.

Reel lowering table to floor mounted conveyor taking the rolls to the Wartsila roll wrapper. Under machine pulper.

**VOITH rewinder**



Model Variflex L, number 246-00-440, machine number 012417E002, year 2005.



# John Wilkie Paper Mill Services Ltd

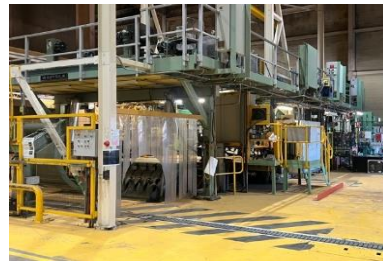
Maryfield, Manse Lane St Fillans Perthshire UK PH6 2NF

Tel 0044 (0)1764 685267 email [jw@wilkiemaryfield.co.uk](mailto:jw@wilkiemaryfield.co.uk)

[www.johnwilkiepms.co.uk](http://www.johnwilkiepms.co.uk)

- Two unwind, prior to unwind section 45 gsm paper, nominal working width 8600mm, maximum speed 2500mm, drive left side from unwind
- Brake generator/ driven unwind
- Two motor drive to rewinder
- Auto tail feed by tapes
- Under machine pulper
- 11 driven slitters, auto knife setting
- Core stack unit with auto core feed into rewinder
- Roll ejector and lowering table

## Wrapping line



### Wartsila Paper wrapping line

Infeed from floor conveyors from rewinders

Reel infeed conveyor

Reel pusher into the wrapper.

Maximum production of wrapped rolls 2400 rolls/24 hrs,

Rolls wrapped in paper. Eight roll stations/unwinds above the wrapper, rolls are 1200mm diameter, 2290mm width with 76mm cores.

Rolls wrapped:

Diameter 915 -1016mm diameter

Width 508- 1830mm

Roll weights 264-1294 kgs.

**Directors: John Wilkie, Christine Wilkie B.Sc. B.Acc.(Hons), C.A.**

**Registered in Scotland: No. SC 254554 Vat No. GB 827444418**



# John Wilkie Paper Mill Services Ltd

Maryfield, Manse Lane St Fillans Perthshire UK PH6 2NF

Tel 0044 (0)1764 685267 email [jw@wilkiemaryfield.co.uk](mailto:jw@wilkiemaryfield.co.uk)

[www.johnwilkiepms.co.uk](http://www.johnwilkiepms.co.uk)

The roll is pushed from the conveyor to the lifting cradle that lifts roll up to weighing/centering device, after centering roll proceeds to the wrapper. The lifting, weighing, centering, gluing, and wrapping stages of the roll are automatic.

Stand holding cardboard circular reel ends

Robot arm feed ends to reel ends.

Hot plate section for sealing sealed crimped ends, reel pusher.

Finished reels lowered into reel store Lemm Reel handling system for reel presentation to Reel grabs.

Four BAC cooling towers at rear of the paper machine for vacuum systems and paper machine cooling.

Tanks at rear of paper machine

Sodium Hydrosulphite

Sulphuric acid tanks, concentrate and diluted

Caustic

Peroxide

Polymer

Building for production of liquid Sodium Hydrosulphite from powder

## Roll Grinder and Balancer



### **Herkules roll grinder**

Number E 41.62 995-31, Model WSB 450/850. Year 1979.

Camber grinding maximum 10mm and minimum 0.01mm

Barrel length 9999 mm

Curve 26 to 180 Deg

Floor space 20 mtrs x 6 mtrs

Distance between centers 12000 mm

Grinding length 11400 mm

Maximum grinding diameter 2000 mm

160 kW

**Directors: John Wilkie, Christine Wilkie B.Sc. B.Acc.(Hons), C.A.**

**Registered in Scotland: No. SC 254554 Vat No. GB 827444418**

Full technical details on request

### Roll balance machine



IRD manufacture. Series 260  
Maximum weight 80,000 Pounds  
Minimum weight 500 Pounds

Maximum weight each support 45,000 Pounds  
Maximum radius 9 inches  
Rotor belt drive diameter 4 to 60 inches  
Machine base total length 45 feet  
Swing diameter on A/F bearings up to 70 inches

### Effluent plant

Treatment plant:  
Mechanical screening, primary clarifier, aeration, secondary clarifier, and sludge press.  
Blower type Hoffman.  
Total daily discharge is about 9,700 m<sup>3</sup>/day and of which half is clean cooling water.  
Inlet to inclined and a rotary screen.  
Screw press discharge of solids to collection bay.

Sludge treatment:  
Winkle belt press 2100mm width. Press has a pre dewatering table with foils.  
Two Andritz belt presses with pre thickening screws. Width 2100mm.  
In mill stores there is a spare Andritz belt press and some wires.

Air compressor and dryer, polymer dosing pumps.

**Stores**



**Refiner spare fillings.**

Item Code	Long Description	Short Description	QOH	UOM	Manufacturer	Manufacturer Ref Code	Supplier Item Reference	Item Type
<b>TMP Mainline Refiners</b>								
3003539	PLATES, REFINER, DIRECTIONAL, PRIMARY, TAIL END ROTOR, ALLOY S17, S85 535A010T2.	PLATES, REFINER, DIRECTIONAL, PRIMARY, TAIL END ROTOR, ALLOY S17, S85 535A010T2.	8	SET	ANDRITZ MUNCHY	300353131		CN
3003540	PLATES, REFINER, DIRECTIONAL, PRIMARY, TAIL END STATOR WITH GAP SCAN PROBE HOLE, ALLOY S17, S85 535SA010T2	PLATES, REFINER, DIRECTIONAL, PRIMARY, TAIL END STATOR WITH GAP SCAN PROBE HOLE, ALLOY S17, S85 535SA010T2	8	SET	ANDRITZ MUNCHY	300353132		CN
3003541	PLATES, REFINER, DIRECTIONAL, PRIMARY, DRIVE END ROTOR, ALLOY S17, S85 535A011T2	PLATES, REFINER, DIRECTIONAL, PRIMARY, DRIVE END ROTOR, ALLOY S17, S85 535A011T2	8	SET	ANDRITZ MUNCHY	300353133		CN
3003542	PLATES, REFINER, DIRECTIONAL, DRIVE END STATOR WITH GAP SCAN PROBE HOLE, ALLOY S17, S85 535SA011T2	PLATES, REFINER, DIRECTIONAL, DRIVE END STATOR WITH GAP SCAN PROBE HOLE, ALLOY S17, S85 535SA011T2	8	SET	ANDRITZ MUNCHY	300353134		CN
3003885	PLATES, REFINER, FIREBRM, PRIMARY, TAIL END ROTOR, S85535A080V	PLATES, REFINER, FIREBRM, PRIMARY, TAIL END ROTOR, S85535A080V	4	SET	ANDRITZ SPROUT-BALKER LIMITED	5815535A080V		CN
3003886	PLATES, REFINER, FIREBRM, PRIMARY, TAIL END STATOR, S85535320U	PLATES, REFINER, FIREBRM, PRIMARY, TAIL END STATOR, S85535320U	4	SET	ANDRITZ SPROUT-BALKER LIMITED	5815535320U		CN
3003887	PLATES, REFINER, FIREBRM, PRIMARY, DRIVE END ROTOR, S85535A080V	PLATES, REFINER, FIREBRM, PRIMARY, DRIVE END ROTOR, S85535A080V	4	SET	ANDRITZ SPROUT-BALKER LIMITED	5815535A080V		CN
3003888	PLATES, REFINER, FIREBRM, DRIVE END STATOR WITH GAP SCAN, S85535320Q	PLATES, REFINER, FIREBRM, DRIVE END STATOR WITH GAP SCAN, S85535320Q	1	SET	ANDRITZ SPROUT-BALKER LIMITED	5815535320Q		CN
3005643	PLATE, SECONDARY, H 25, FLAT, 3/8INCH, STATOR ROTOR, TWIN 50 REFINER, SECONDARY, ALLOY H25.	PLATE, SECONDARY, H 25, FLAT, 3/8INCH, STATOR ROTOR, TWIN 50 REFINER, SECONDARY, ALLOY H25.	33	HST	ANDRITZ SPROUT-BALKER LIMITED	5307143H25 FC	300033652	CN
<b>TMP LC Refiners</b>								
3007670	PLATES REFINER, MODEL T140 L.C. PATTERN 70047A1302A, TAPER, ALLOY 17-4, STAINLESS STEEL	PLATES REFINER, MODEL T140 L.C. PATTERN 70047A1302A, TAPER, ALLOY 17-4, STAINLESS STEEL	6	SET	ANDRITZ SPROUT-BALKER LIMITED	70047A1302A	131622365	CN
3007671	PLATES REFINER, MODEL T140 L.C. PATTERN 70047A1301A, TAPER, ALLOY 17-4, STAINLESS STEEL	PLATES REFINER, MODEL T140 L.C. PATTERN 70047A1301A, TAPER, ALLOY 17-4, STAINLESS STEEL	6	SET	ANDRITZ SPROUT-BALKER LIMITED	70047A1301A	131622363	CN
<b>TMP Rejects Refiners</b>								
3008756	PLATES, REFINER, EPOXY FILLED ROTOR, 485A018 S17 GT, WBS-ELEMENT: S-03-447174-612, MATERIAL CODE: 300883136	PLATES, REFINER, EPOXY FILLED ROTOR, 485A018 S17 GT, WBS-ELEMENT: S-03-447174-612, MATERIAL CODE: 300883136	8	SET	ANDRITZ MUNCHY	300853136		CN
3002811	PLATE, REJECTS, 585485A019GT, ALLOY S17	PLATE, REJECTS, 585485A019GT, ALLOY S17	8	HST	ANDRITZ MUNCHY	300591961		CN
3009907	PLATE, REJECTS, 485A018, S18, VM	PLATE, REJECTS, 485A018, S18, VM	2	SET	ANDRITZ SPROUT-BALKER LIMITED	485A018 JID #	485A018 JID #	CN
3009996	PLATE, REJECTS, 485A018, S18, VM	PLATE, REJECTS, 485A018, S18, VM	2	SET	ANDRITZ SPROUT-BALKER LIMITED	485A018 JID #	485A018 JID #	CN
4100729	REFINER PLATES, SET FOR BELTLOT 38INCH DD4000 REFINER ALLOY08, FLAT	REFINER PLATES, SET FOR BELTLOT 38INCH DD4000 REFINER ALLOY08, FLAT	1	SET	Valmet Technologies & Services AB	38876108V0850	38876108V0850	CN
<b>DIP Disperger</b>								
3000886	PLATES, DISPENSER, OUTER POSITION, CONSISTING OF 1 SEGMENTED CIRCLE OF PATTERN 52W9101 (ROTOR), AND 1 SEGMENTED CI	PLATES, DISPENSER, OUTER POSITION, CONSISTING OF 1 SEGMENTED CIRCLE OF PATTERN 52W9101 (ROTOR), AND 1 SEGMENTED CI	6	SET	ANDRITZ SPROUT-BALKER LIMITED	30 52W9101	131572903 +	CN
3001154	PLATES, REFINER, INNER ROTOR AND STATOR, 32V8001, 1 SET, H25.	PLATES, REFINER, INNER ROTOR AND STATOR, 32V8001, 1 SET, H25.	7	SET	ANDRITZ SPROUT-BALKER LIMITED	32V8001	30056445	CN

**THIS INFORMATION IS THE TITLE OF JOHN WILKIE PAPER MILL SERVICES LTD AND SHOULD NOT BE COPIED OR FORWARDED TO A THIRD PARTY WITHOUT CONSENT.**

**FOR YOUR GENERAL INFORMATION WE HAVE TO INTIMATE THE FOLLOWING TO YOU:**

**This schedule has been prepared solely for the guidance of prospective purchasers and does not constitute (and at no time shall be deemed to constitute) an offer or contract or any part of an offer or contract. Additionally, no warranty is given to the accuracy of any measurements, specifications or other details whatsoever given within this schedule. Whilst every reasonable effort has been made to verify any statement, description, or comment made within this schedule, for the avoidance of**



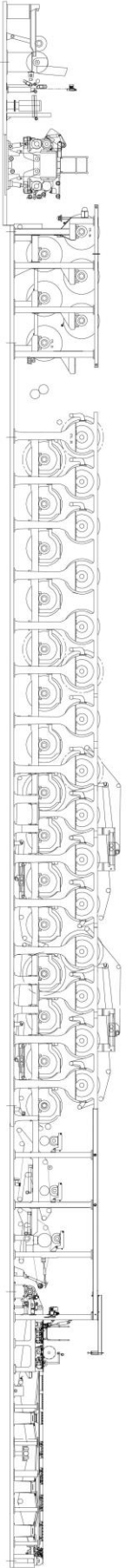
# John Wilkie Paper Mill Services Ltd

Maryfield, Manse Lane St Fillans Perthshire UK PH6 2NF

Tel 0044 (0)1764 685267 email [jw@wilkiemaryfield.co.uk](mailto:jw@wilkiemaryfield.co.uk)

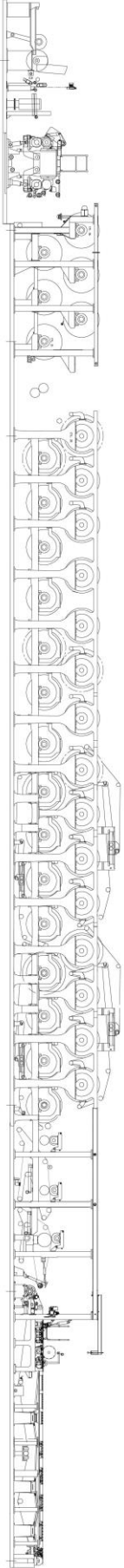
[www.johnwilkiepms.co.uk](http://www.johnwilkiepms.co.uk)

**doubt it is emphasised that the purchaser must make their own enquiries and satisfy themselves.**



**Directors: John Wilkie, Christine Wilkie B.Sc. B.Acc.(Hons), C.A.  
Registered in Scotland: No. SC 254554 Vat No. GB 827444418**

**John Wilkie Paper Mill Services Ltd**  
Maryfield, Manse Lane St Fillans Perthshire UK PH6 2NF  
Tel 0044 (0)1764 685267 email [jw@wilkiemaryfield.co.uk](mailto:jw@wilkiemaryfield.co.uk)  
[www.johnwilkiepms.co.uk](http://www.johnwilkiepms.co.uk)



**Directors: John Wilkie, Christine Wilkie B.Sc. B.Acc.(Hons), C.A.**  
**Registered in Scotland: No. SC 254554 Vat No. GB 827444418**